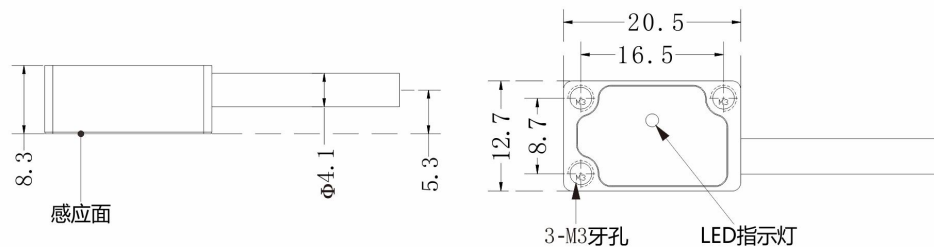




# LMA 增量式磁栅编码器

## LMA INCREMENTAL MAGNETIC GRID ENCODER



标注单位: mm

### 性能和优势

- 高系统精度,高重复精度  
High system accuracy, high repeatability
- 智能告错指示灯  
Intelligent error indicator light
- 高品质连接线,编织屏蔽线,耐折弯,耐磨,抗干扰  
High quality wiring, braided shielding wire, bending resistance, abrasion resistance, anti-interference
- 小体积, 高分辨率  
Small size, high resolution
- 高输出频率 8000KHz  
High output frequency 8000KHz
- 体积小,适用于小安装空间  
Small size, suitable for small installation space

### 产品技术参数

特性 (Characteristic)	技术参数 (Technical parameter)
供电电压 (Supply Voltage)	5V +/-5%
磁间距 (Magnetic spacing)	2+2mm
分辨率 (Resolving power)	0.5μm
重复精度 (Repetition accuracy)	±1μm
输出频率 (Output frequency)	2500KHz
速度 (Speed)	4m/s(可按客户定制) (Can be customized)
线缆 (Cable)	8芯屏蔽线 (8-core shielded wire)
接线方式 (Wiring method)	DB15(公座) (Public seat)
输出形式 (Output form)	RS422
LED状态指示 (LED status indication)	红/绿色 (Red/green)
电流 (Electric current)	小于40mA (Less than 40 mA)
可订制参数 (Customizable parameters)	分辨率, 输出频率, 计数方向, 线缆长度 Resolution, output frequency, counting direction, cable length
防护等级 (Protection Class)	IP67