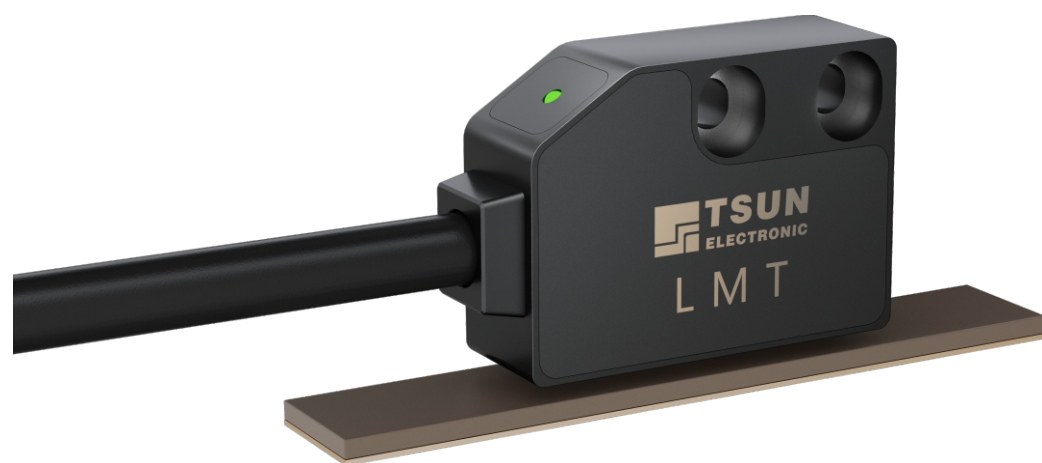


INCREMENTAL MAGNETIC GRID ENCODER

增量式磁栅编码器

LMT



- **高系统精度,高重复精度**
High system accuracy, high repeatability
- **高间隙公差,任意测量长度**
High clearance tolerance, arbitrary measuring length
- **智能告错指示灯,显示编码器的工作状态**
Intelligent error indication lamp to display the working state of encoder
- **高品质连接线,编织屏蔽线,耐折弯,耐磨,抗干扰**
High quality wiring, braided shielding wire, bending resistance, abrasion resistance, anti-interference
- **工业标准数字信号 (A+,A-,B+,B-,Z+,Z-),标准 RS422 差分信号**
Industrial standard digital signals (A+, A-, B+, B-, Z+, Z-), standard RS422 differential signals
- **高分辨率(磁距2mm,分辨率最小可以0.0305um)**
High resolution, (2mm magnetic distance, minimum resolution 0.0305um)
- **体积小,适用于小安装空间**
Small size, suitable for small installation space
- **防护等级高,耐油,灰尘,润滑剂等污染**
High level of protection, oil, dust, lubricants and other contaminants
- **可定制最高输出频率(最大输出频率可达8000KHz)**
Customizable maximum output frequency (maximum output frequency can be Up to 8000KHz)
- **非接触式测量,耐灰尘、耐磨损、耐冲击、抗振动、抗磁场干扰**
Non-contact measurement, dust resistance, wear resistance, impact resistance, vibration resistance, magnetic field interference resistance

特性 (Characteristic)	技术参数 (Technical parameter)
供电电压 (Supply Voltage)	5V +/-5%
磁间距 (Magnetic spacing)	2+2mm
分辨率 (Resolving power)	1μm
重复精度 (Repetition accuracy)	±2μm
输出频率 (Output frequency)	1000KHz
速度 (Speed)	4m/s(可按客户定制) (Can be customized)
线缆 (Cable)	8芯屏蔽线 (8-core shielded wire)
接线方式 (Wiring method)	直接出线 (Direct outgoing)
输出形式 (Output form)	RS422
LED状态指示 (LED status indication)	红/绿色 (Red/green)
电流 (Electric current)	小于45mA (Less than 45 mA)
可订制参数 (Customizable parameters)	分辨率, 输出频率, 计数方向, 线缆长度 Resolution, output frequency, counting direction, cable length
防护等级 (Protection Class)	IP67

安装和调试要点, 详见产品说明书 (Installation and commissioning points are detailed in the product instruction)

